



## COMPLIMENTARY WIFI

Network: FINCH GUEST  
Password: Downtown325

## CONTACT YOUR GUIDE

Text: 509.404.1975  
Call: 509.956.4994

# WELCOME TO THE FINCH

On behalf of the entire team and our ownership group, welcome to The FINCH.

Inspired by Main Street and the history of the area, The FINCH was designed to provide a truly authentic Walla Walla experience - from our location in the heart of downtown to the custom artwork in every guestroom and our team of recreation-loving locals who can't wait to share their knowledge and enthusiasm as your area Guides.

Visit us in the Lobby, or wander down to the patio and grab a seat by the fireplace. We look forward to helping personalize your Walla Walla adventure.

## FINCH GUESTROOMS

The FINCH guestrooms were created with the comfort and convenience of our guests in mind. The graphic art pieces in each room were created by artists who have connections to Walla Walla and want you to be as inspired by this place as they are. These infographic wall installations depict the endless possibilities for exploration and the history of Walla Walla.

Our guestrooms were built with everything you need and nothing you don't. Notice there's no hardwired phone? (No, your phone wasn't stolen!) With our text-based services, you'll receive a text from our team before you check in so you can communicate with us directly from your own device. Think you really need to iron that shirt? Text us. Chances are high we have what you need at the Front Desk, and we can run it to your room.

## FINCH GUIDES

Local knowledge is the key to a great Walla Walla adventure. Whether you're looking for the best local winery, a sweet bike route, or something to do tonight, The FINCH Guides can help. **Visit us in the Lobby or text us at 509.404.1975.**

# FINCH AMENITIES

Here are a few tips on how to make the most of your stay:

## THE LOBBY + LOFT

The basecamp for your FINCH experience. You'll find the FINCH Guides here, along with our 24-hour front desk and a collective workspace if you need access to a phone or help with printing or making copies. Come by anytime, we'd love to hear about your Walla Walla adventure.

## FUEL FOR YOUR DAY

The FINCH is thrilled to partner with Livit Coffee Co. and Hummingbird Teas to provide Walla Walla's finest artisan coffee and tea in the Lobby daily.

## GATHERING SPACES

Don't forget to sit back and chill around the wood-burning fireplace on the front patio. The fire will be roaring seasonally. Picnic over on the lawn while you play games of corn hole. Looking for some friendly competition? We have board games stocked up in the Loft. One thing's for sure, there's no shortage of gathering spaces, so make yourself at home.

## LEAVE A TIP!

What to reward our team for a job well done but don't have cash? [Click here](#) for cashless gratuity options.

## WHAT'S ON THE TV?

[Click here](#) to be directed to our in-room channel guide! If you don't see anything you want to watch, text our guides for a complimentary ROKU during your stay!

## FORGET ME NOT + THE FLUFF FACTOR

Forgot a toothbrush, toothpaste, razor, comb, shower cap, etc.? Need an extra pillow? We can hook you up - stop by the Front Desk or text your FINCH Guide.

## BUY, BORROW & FREE ITEMS

Like what you see in the room, forget something at home, or have a special request for our team? [Click here](#) to peruse our list of available items for use or purchase during your stay. Please note all items are subject to availability.

## ICE

Ice machines are in the following locations:

- Building A right outside the main lobby
- Building B between rooms 111 and 115
- Building B between rooms 215 and 217
- Building D between rooms 240 and 242

# FEATURED FINCH PARTNERS

Ask your Guide for more details!

## BEER AND WINE

At The FINCH, we're passionate about championing local businesses and providing guests with an authentic Walla Walla experience. That's why we've forged partnerships with some outstanding local [wineries](#) and [breweries](#) for our monthly spotlight program. Whether you're enjoying a taste at check-in, an exclusive invite to our happy hour, or receiving insider tips on the must-visit stops during your stay, we'll ensure you experience a distinctive Walla Walla adventure. **Show your FINCH field journal at any participating venue for up to 20% off your purchases.** Ask your Guide for more details!

## GOLF

**FINCH guests receive 20% of greens fees** at [Wine Valley Golf Course](#). Contact our Guides for assistance with booking your tee time.

## BIKING

FINCH guests receive discounts on bike rentals and tours through [Allegro Cycle](#) (10% off with code FINCH) and [Kickstand Tours](#) (25% off with code FINCH 25).

Brought your bikes? Awesome! Ensure you're ready to hit the trail and stop by our bike maintenance station just outside the Lobby under Building A. We kindly suggest you do not leave bikes secured to your vehicles, so feel free to stop by the Front Desk and ask our Guides about our different bike storage options for when your day on two wheels is done.

## ART AT THE FINCH

[Click here](#) to enjoy our self-guided art tour featuring local and regional artists around our property. We feature art from a new artist each month in our Flex Room.

# CONNECT WITH US

## SOCIAL MEDIA

Follow us on social media and tag us in the photos from your trip!

- **Instagram:** [@finchwallawalla](#)
- **Facebook:** [The FINCH](#)

## TRIPADVISOR

Tell us how we did! [Click here](#) to leave us a review on Tripadvisor.

# FINCH POLICIES

## DEPARTURE

Standard check-out is at 11 AM. Let us know if you need to request earlier or later timing - we'll do our best to make it happen.

## QUIET HOURS

For the comfort of all FINCH guests (and because we all need our beauty sleep), we like to keep things quiet from 10 PM to 7 AM.

## EMERGENCIES

Please dial 911 immediately and notify your FINCH Guide. In the case of fire, evacuate your room and proceed beyond the perimeter of the property.

## SAFETY TIPS

The FINCH (and Walla Walla in general) is a very safe place, but we recommend the following tips to ensure all is well:

- Store your valuables in a secure location, such as the safe in your guestroom.
- Do not leave bikes secured to your vehicles, use our bike storage instead.
- Make sure to close your guestroom door tightly when you leave the room.
- Use the deadbolt lock on your door and lock all windows when you call it a night.
- Don't let anyone in your room without an identification - use the peephole y'all.
- Safeguard your key - don't leave it in your room when you're out and about and be sure to leave it with the front desk upon departure.

Stop by the Front Desk or contact your FINCH Guide with any questions.

**CALL: 509.956.4994 | TEXT: 509.404.1975**

## FRIENDS OF THE FINCH - JOIN THE NEST

[The LARK](#) in Bozeman, Montana (2015)

[The FINCH](#) in Walla Walla, Washington (2019)

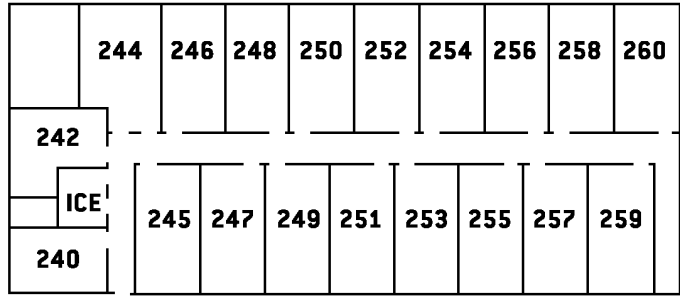
[The WREN](#) in Missoula, Montana (2022)

[The SPARROW](#) in Boise, Idaho (opening 2024)

When you stay with us, you join our flock. The Nest is a group of one-of-a-kind hotels created by resurrecting unused buildings and breathing new life into the downtown spaces they call home. All properties feature essentialism and high design intent while remaining true to and genuinely inspired by their surroundings, making each stay unique to its respective city yet familiar to The Nest.

N. PALOUSE ST.

**BUILDING D**  
1<sup>ST</sup> PARKING  
2<sup>ND</sup> FLOOR

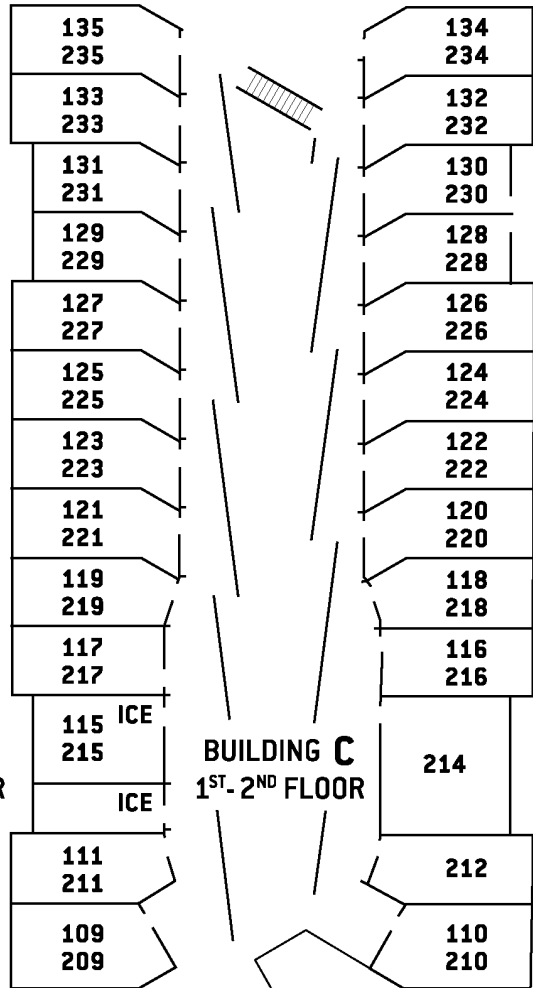


E. MAIN ST.

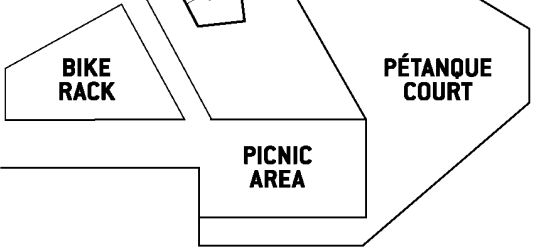
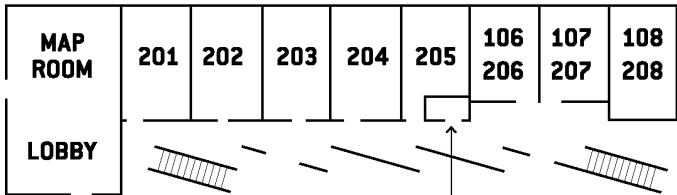
E. ROSE ST.

**BUILDING B**  
1<sup>ST</sup>-2<sup>ND</sup> FLOOR

**BUILDING C**  
1<sup>ST</sup>-2<sup>ND</sup> FLOOR



**BUILDING A**  
1<sup>ST</sup>-2<sup>ND</sup> FLOOR



TUKANNON ST.