



## BREAKFAST

AVAILABLE 7AM TO 9AM DAILY

- RICOTTA PANCAKES (v).....19  
FRESH BERRIES, VANILLA BEAN, ANGLAISE
- BEN PARIS BREAKFAST.....23  
2 EGGS YOUR WAY, BACON OR ANDOUILLE SAUSAGE, YUKON GOLD POTATOES, SOURDOUGH TOAST, MINI YOGURT AND GRANOLA PARFAIT
- BREAKFAST SANDWICH.....20  
HOUSE-MADE CHIVE BISCUIT, FENNEL SAUSAGE, BEECHER'S CHEDDAR, SPICY MAYO, PICKLED FRENCH CHILI'S, FRIED EGG, YUKON POTATOES
- AVOCADO TOAST (v).....15  
GREEN GODDESS, RADISH, TOASTED PEPITAS, PEA SHOOTS / ADD EGG +2

## SIDES

- SOURDOUGH TOAST.....4
- 2 EGGS.....6
- ANDOUILLE SAUSAGE.....7
- BACON.....7
- YUKON GOLD POTATOES.....9
- PARMESAN TRUFFLE FRIES.....12
- GREEK YOGURT PARFAIT.....15



*\*A 20% taxable mandatory service charge will be added to parties of six or more. 100% of the service charge will be distributed to service personnel. An additional 3% taxable mandatory service charge will also apply to all items, 100% of which will be distributed to our culinary team and stewards working behind the scenes.*



## BREAKFAST

AVAILABLE 7AM TO 9AM DAILY

- RICOTTA PANCAKES (v).....19  
FRESH BERRIES, VANILLA BEAN, ANGLAISE
- BEN PARIS BREAKFAST.....23  
2 EGGS YOUR WAY, BACON OR ANDOUILLE SAUSAGE, YUKON GOLD POTATOES, SOURDOUGH TOAST, MINI YOGURT AND GRANOLA PARFAIT
- BREAKFAST SANDWICH.....20  
HOUSE-MADE CHIVE BISCUIT, FENNEL SAUSAGE, BEECHER'S CHEDDAR, SPICY MAYO, PICKLED FRENCH CHILI'S, FRIED EGG, YUKON POTATOES
- AVOCADO TOAST (v).....15  
GREEN GODDESS, RADISH, TOASTED PEPITAS, PEA SHOOTS / ADD EGG +2

## SIDES

- SOURDOUGH TOAST.....4
- 2 EGGS.....6
- ANDOUILLE SAUSAGE.....7
- BACON.....7
- YUKON GOLD POTATOES.....9
- PARMESAN TRUFFLE FRIES.....12
- GREEK YOGURT PARFAIT.....15

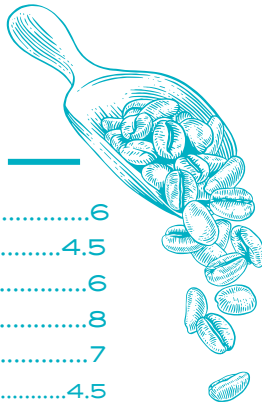


*\*A 20% taxable mandatory service charge will be added to parties of six or more. 100% of the service charge will be distributed to service personnel. An additional 3% taxable mandatory service charge will also apply to all items, 100% of which will be distributed to our culinary team and stewards working behind the scenes.*

Ben Paris

COFFEE & TEA

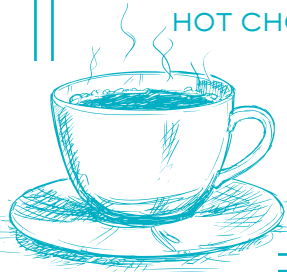
Menu items for coffee and tea including Caffe Vita Luna Roast Drip Coffee, Espresso, Americano, Caramel Macchiato, Cappuccino, Latte, and various flavored lattes and teas.



N/A BEVERAGES

Menu items for non-alcoholic beverages including Lemonade, Iced Tea, Arnold Palmer, Soda, Dry Soda, San Pellegrino, Juices, and Hot Chocolate.

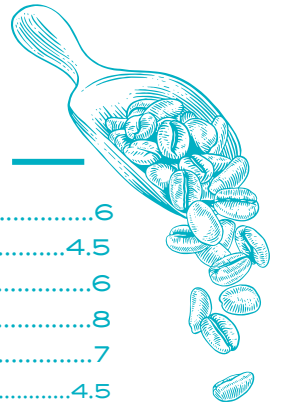
\*A 20% taxable mandatory service charge will be added to parties of six or more. 100% of the service charge will be distributed to service personnel. An additional 3% taxable mandatory service charge will also apply to all items, 100% of which will be distributed to our culinary team and stewards working behind the scenes.



Ben Paris

COFFEE & TEA

Menu items for coffee and tea including Caffe Vita Luna Roast Drip Coffee, Espresso, Americano, Caramel Macchiato, Cappuccino, Latte, and various flavored lattes and teas.



N/A BEVERAGES

Menu items for non-alcoholic beverages including Lemonade, Iced Tea, Arnold Palmer, Soda, Dry Soda, San Pellegrino, Juices, and Hot Chocolate.

\*A 20% taxable mandatory service charge will be added to parties of six or more. 100% of the service charge will be distributed to service personnel. An additional 3% taxable mandatory service charge will also apply to all items, 100% of which will be distributed to our culinary team and stewards working behind the scenes.

