



CONTACT YOUR GUIDE

Call: 208.998.0800

Text: 844.593.0525

WIFI

Sparrow Guest

WELCOME TO THE SPARROW

On behalf of the entire team and our ownership group, welcome to The SPARROW.

Inspired by the local culture of Boise, our facilities have been revived and repurposed to embody the comfort and essentialism around Idaho, thus, The SPARROW was born.

From our location in the heart of downtown Boise to one-of-a-kind, local art in each guestroom and our team of adventure-loving Guides eager to share their expertise on the surrounding area, our goal is to show you that **The SPARROW is where Boise Begins.**

SPARROW GUESTROOMS

Uniquely designed to provide everything you need and nothing you don't, our downtown Boise hotel rooms are modern yet comfortable. Simple, but completely unique. We want you to feel immersed in the community vibe that is Boise, Idaho. Our 67 rooms are filled with nods to our Idaho roots with sliding barn doors and local art, unique to each room.

Along with the unique atmosphere, the features of each room let you unwind at the end of the day. Comfy pillow-top beds, tiled bathrooms with a walk-in shower, and convenient amenities combine to create the perfect haven in the heart of the city. With various room types, it's not hard to find the right setting just for you.

SPARROW GUIDES

Our team of Guides are your go-to experts for all things Boise! Stop by our 24/7 front desk to ask them for suggestions on where to go, what to do, what to see, and more during your stay. Visit us in the lobby or call us at 208.998.0800.

SPARROW AMENITIES

Here are a few tips on how to make the most of your stay:

FUEL FOR YOUR DAY

The SPARROW is thrilled to partner with Form and Function, a distinctive craft coffee haven nestled in Boise, and now our lobby! Stop by and choose from their menu of seasonal drinks and food items to fuel your adventure in the heart of downtown.

- **Open daily from 7 AM - 4 PM.**

Crisp food truck is Boise's locally sourced and globally inspired cuisine on wheels, parked on-site at our hotel!

- **11 AM - 9 PM Wednesday - Friday, & Sunday**
- **4 PM - 9 PM Saturday**

In addition to our on-site partnerships, ask our Guides about the free snacks available in our lobby for guests.

INDOOR GATHERING SPACES

Not ready to retire to your room for the night? Linger in any of our indoor hotel Gathering Spaces to connect with the ones you're traveling with or another hotel guest. These spaces are available on a first-come, first-served basis 24 hours a day.

- Exterior Courtyard
- Upstairs Lobby
- Elevator Lobby (located in the main building)

OUTDOOR SPACES

Boise sees more than 200 days of sun each year! Because of this, we have curated various Outdoor Spaces where you can indulge in these golden rays during your stay with us. These spaces are available on a first-come, first-served basis from 7 AM - 10 PM.

- Live Fireplace
- Corn Hole
- Shaded Seating
- Pétanque Court

SPARROW AMENITIES

Here are a few tips on how to make the most of your stay:

PARKING

General on-site guest parking is available for \$15 per day, per stay, on a first-come, first-served basis. The SPARROW has 35 spots available and four electric vehicle charging stations.

Premier on-site parking is available for \$20 per day, per stay. This allows guests to secure a personal parking spot throughout their stay. Stop by the front desk to ask our Guides about this upgrade, call 208.998.0800, or text 844.593.0525.

Additional off-site parking is available at the 10th and Front Garage. Parking is subject to garage pricing and availability.

FORGOT SOMETHING?

Stop by our 24-hour Front Desk or call our Guides for any additional in-room requests. Forgot your toothbrush? Need an extra pillow? We're here to help. **Call: 208.998.0800 Text: 844.593.0525.**

ICE

The ice machine can be found in our ground floor, elevator lobby.

HOUSEKEEPING

Want your room refreshed? Housekeeping services are offered daily from **8 AM - 3 PM**. Guests can opt out of these services by using the "Do Not Disturb" signage in their room.

LEAVE A TIP

Want to reward our team for a job well done but don't have cash? [Click here for cashless gratuity options.](#)

SPARROW PARTNERS

By staying at The SPARROW, you get exclusive perks and access to our list of local partners.

CRISP FOOD TRUCK AT THE SPARROW

- **Located on our Patio**
- Hours:
 - Wednesday - Friday & Sunday 11 AM - 9 PM
 - Saturday 4 PM - 9 PM

FORM AND FUNCTION AT THE SPARROW

- **Located in our Lobby**
- Hours:
 - Daily 7 AM - 4 PM

IDAHO MOUNTAIN TOURING

- **1310 W Main St - 0.5 miles from our lobby.**
- Hours:
 - Monday - Friday 10AM - 6PM
 - Saturday 9AM - 6PM
 - Sunday 11AM - 5PM

8TH & MAIN GYM

- **800 W. Main Street Suite 210 - 0.3 miles from our lobby.**
- Complimentary gym access during your stay.
 - Stop by the Front Desk for an access card.
- Hours:
 - Monday - Thursday 6AM - 8PM
 - Friday 6AM - 6PM
 - Saturday 8AM - 12PM

BOISE ART MUSEUM

- **670 Julia Davis Drive - 0.7 miles from our lobby.**
- Hours:
 - Tuesday - Saturday 10AM - 5PM
 - Sunday Noon - 5PM
 - 1st Thursday 10AM - 7PM
 - Closed Mondays

SPARROW POLICIES

Ask your Guide for more details!

QUIET HOURS

- 10 PM - 7 AM

CHECK-IN

- Check-In: 3 PM
- Early Check-In: based on availability. Our Front Desk Team can hold guest items at the desk for early arrivals.

CHECK-OUT: 11 AM

- Late Check-Out: 12PM, based on availability
- Later Check-Out: 12PM-1PM, \$50 charge based on availability
- Latest Check-Out: 1PM-3PM half-day rate based on availability
- Departure after 3pm will be charged a full-day rate

DOG-FRIENDLY STAYS

Dog-friendly rooms are available upon request for \$35 per night (maximum \$70 per stay). Advance reservations are required, and rooms are limited and subject to availability. Guests traveling with pets must call 208.998.0800 prior to booking.

FRIENDS OF THE SPARROW - JOIN THE NEST

[The LARK](#) in Bozeman, Montana (2015)

[The FINCH](#) in Walla Walla, Washington (2019)

[The WREN](#) in Missoula, Montana (2022)

[The SPARROW](#) in Boise, Idaho (opening 2024)

When you stay with us, you join our flock. The Nest is a group of one-of-a-kind hotels created by resurrecting unused buildings and breathing new life into the downtown spaces they call home. All properties feature essentialism and high design intent while remaining true to and genuinely inspired by their surroundings, making each stay unique to its respective city yet familiar to The Nest.

CONNECT WITH US

Thank you for choosing The SPARROW.

SOCIAL MEDIA

Follow us on social media and tag us in the photos from your trip!

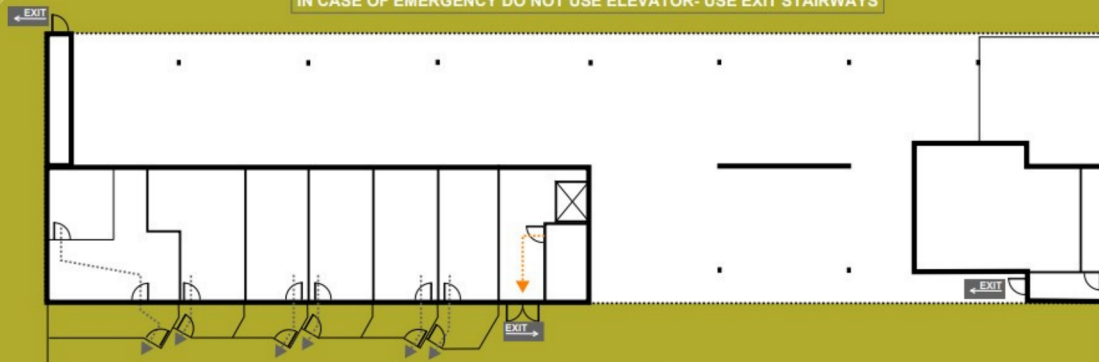
- **Instagram:** [@sparrowboise](#)
- **Facebook:** [The SPARROW](#)

TRIPADVISOR

Tell us how we did! [Click here](#) to leave us a review on Tripadvisor.

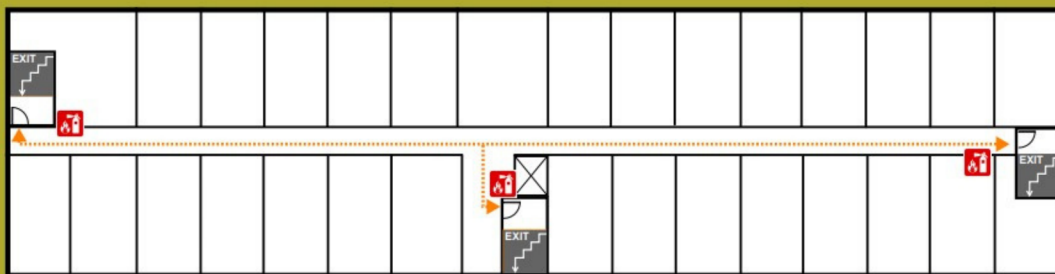
GROUND LEVEL EVACUATION MAP

IN CASE OF EMERGENCY DO NOT USE ELEVATOR- USE EXIT STAIRWAYS



LEVEL TWO EVACUATION MAP

IN CASE OF EMERGENCY DO NOT USE ELEVATOR- USE EXIT STAIRWAYS



LEVEL THREE EVACUATION MAP

IN CASE OF EMERGENCY DO NOT USE ELEVATOR- USE EXIT STAIRWAYS

