



COMPLIMENTARY WIFI

NETWORK: Wrenguest

PASSWORD: downtown201

CONTACT YOUR GUIDE

TEXT: 406-319-3400

CALL: 406-401-4400

Welcome to The Wren

On behalf of the entire Wren team and the eclectic community of Missoula, welcome to The Wren.

Inspired by the art and culture of the city, The Wren was designed to provide a truly authentic Missoula experience from start to finish – from our central location perfect for any type of adventure, to the modern Montana-inspired guestrooms, and our team of Missoula Guides who can't wait to point you in the right direction.

Visit us in the lobby or wander down to the courtyard for some calm in the city. We look forward to helping personalize your Western Montana journey.

WREN GUESTROOMS

Every detail of our guestrooms reflects the quirkiness of Missoula. The rooms are modern and funky but still a comfortable space. The rooms are filled with nods to our Montana roots with sliding barn doors and local art graphics.

Our guestrooms were built with everything you need and nothing you do not. Notice there is no hardwired phone? With our text-based servicing, you will receive a text from our team after check-in so you can communicate with us directly from your own device.

WREN GUIDES

Need a restaurant recommendation? We got you. Looking for the perfect hiking spot? Say no more! Our expert team knows Missoula like the back of their hand and will make sure you explore the area like a local. Whether you are looking for the best local brewery, fishing hole, or hiking trail, The Wren Guides can help. Visit us in the lobby or text us.

WREN AMENITIES

The Wren offers everything you need for your heart of the city stay. Here are a few tips to make your Missoula adventure that much better:

The Lobby

The basecamp for your Wren experience. You will find the Wren Guides here along with our 24-hour front desk and a collective workspace if you need access to a phone, help with printing or making copies. Come by anytime; we would love to hear about your Montana memories.

Basecamp

Basecamp is the on-site coffee shop at The Wren. We love Missoula, and because we're located in the heart of downtown, we were inspired to curate a thoughtful lineup of delicious and locally sourced menu items to represent a melting pot of Missoula flavors. At Basecamp, we're here to ensure that your day starts with a taste of the very best that Missoula has to offer and a glass that's half full, whether it's your first or fiftieth visit. **Stop by from 7 AM - 2 PM daily.**

Valet Parking

Need your vehicle or help with bags? Please text the front desk for assistance.

Wi-Fi

It is complimentary and available throughout the hotel. You should have received the password upon check-in, but if not, sorry we left you hanging! Come by the Lobby or contact your Wren Guides, and we will get you connected.

The Courtyard

Take a moment to sit and relax in our urban oasis. Once you are ready, Missoula's vibrant downtown is awaiting you outside.

Ice

Because we would hate for your beverages to get warm, there are two ice machines available. Both are located next to the south stairwell, one on the second floor and the other on the third floor.

Forget Me Nots

Forgot a toothbrush, toothpaste, razor, comb, shower cap, etc.? We can hook you up – stop by the Lobby or text your Wren Guide

Leave a Tip!

Want to reward our team for a job well done but don't have cash? [Click here](#) for cashless gratuity options.

WREN POLICIES

The Wren offers everything you need for your heart of the city stay. Here are a few tips to make your Missoula adventure that much better:

Departure

Check-out is at 11am. Let us know if you need to request a later time, and we will do our best to make it happen.

Quiet Hours

For the comfort of all Wren guests (and because we all need our beauty sleep), we like to keep things quiet from 10pm to 7am.

Emergencies

Please dial 911 immediately. Also, notify your Wren Guide for additional assistance. In the case of fire, evacuate our room and proceed beyond the perimeter of the property.

Safety Tips

The Wren (and Missoula in general) is a very safe place, but we recommend the following tips to ensure all is well:

- Store all your valuables in a secure location, such as the safe in your guestroom.
- Make sure to close your guestroom door tightly when you leave the room.
- Use the deadbolt lock on your door and lock all windows when you call it a night.
- Don't let anyone in your room without identification – use the peephole y'all.
- Safeguard your key – don't leave it in your room when you're out and about and be sure to leave it with the front desk upon departure.

Stop by the Lobby or reach out to your Wren Guide with any questions at 406-401-4400.

Dog Policy

At The Wren, we welcome the whole family, including your beloved canine companions. To ensure a pleasant experience for all our guests, please abide by our simple dog friendly rules as agreed to at the time of check-in. There are great green spaces and dog parks just steps away for a quick bathroom break or a game of fetch. Head to the Map Room for more pup-friendly spots.

Operating Your Daiken Thermostat

1. On the main interface of the thermostat, there is the two buttons to control temperature, the "SYS" button and the "FAN" button
2. Pressing the bottom left button, or the "SYS" button, switches your thermostat between "Heat" and "Cool."
 - a. To constantly heat, leave only the heat setting on.
 - b. To constantly cool, leave only the cool setting on.
 - c. To turn the whole system off, press the "SYS" button until no heat or cool settings are visible on the interface.
3. Pressing the bottom right button, or the "FAN" button, switches your fan on and off.
 - a. To constantly heat/cool, leave the "FAN" indicator on the screen.
4. Above the "SYS" and "FAN" buttons are the buttons for setting the temperature. The top button turns up the temperature and the bottom button turns down the temperature.

FRIENDS OF THE WREN - JOIN THE NEST

[The LARK](#) in Bozeman, Montana (2015)

[The FINCH](#) in Walla Walla, Washington (2019)

[The WREN](#) in Missoula, Montana (2022)

[The SPARROW](#) in Boise, Idaho (2024)

When you stay with us, you join our flock. The Nest is a group of one-of-a-kind hotels created by resurrecting unused buildings and breathing new life into the downtown spaces they call home. All properties feature essentialism and high design intent while remaining true to and genuinely inspired by their surroundings, making each stay unique to its respective city yet familiar to The Nest.

CONNECT WITH US

Social Media

Follow us on social media and tag us in the photos from your trip!

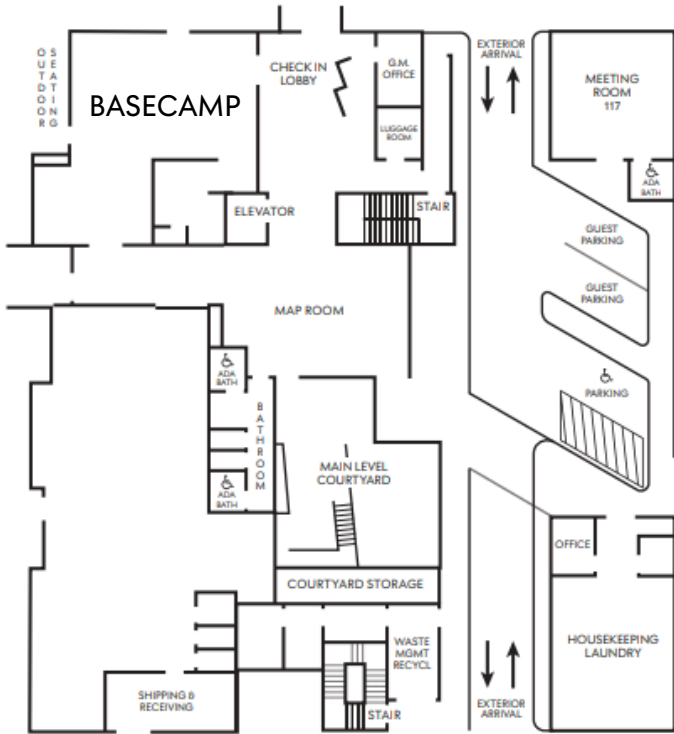
- Instagram: [@wrenmissoula](#) and [@basecampmissoula](#)
- Facebook: [The Wren](#) and [Basecamp Coffee](#)

TRIPADVISOR

Tell us how we did! Click below to leave us a review on Tripadvisor.

- [Review The Wren](#)
- [Review Basecamp](#)

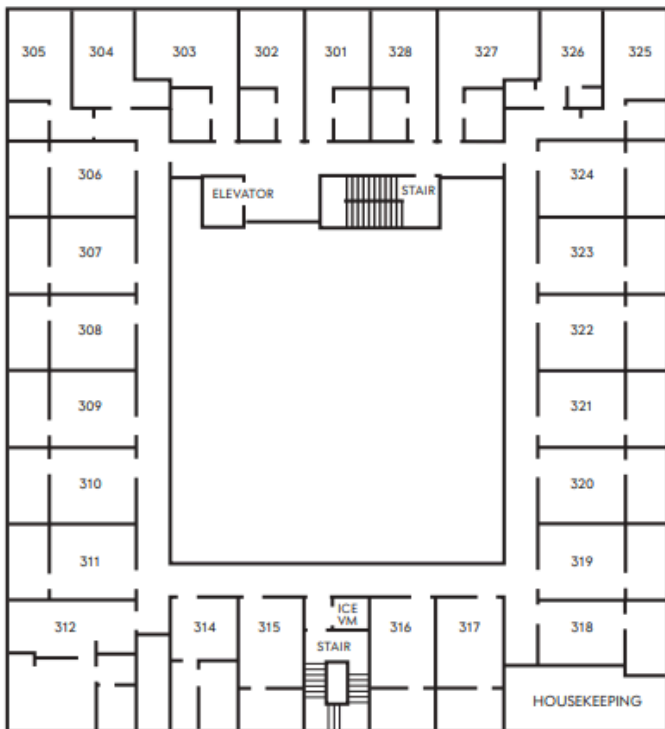
MAIN LEVEL ROOMS



SECOND LEVEL ROOMS



THIRD LEVEL ROOMS



FOURTH LEVEL ROOMS

